

**Jim Pace**  
**Pastor**  
**1.31.16**



**TRAJECTORY**

A graphic at the top of the slide features a dark purple and blue background. A dashed white line with a white triangle pointing downwards intersects a solid green circle. The word "TRAJECTORY" is written in white capital letters across the green circle. To the right, a vertical series of white horizontal lines of varying lengths creates a scale-like effect.

TRAJECTORY

# Prostitutes' babies and deformed kids

your kingdom  
your will  
on earth

A diagram at the top of the slide shows a dashed line representing a trajectory. A small white triangle points to the line, and a green circle highlights the word "TRAJECTORY". The background is dark with a vertical grid of white lines on the right side.

TRAJECTORY

**Let me explain a little bit of what I  
mean by that...**

your kingdom  
your will  
on earth

# Soranus

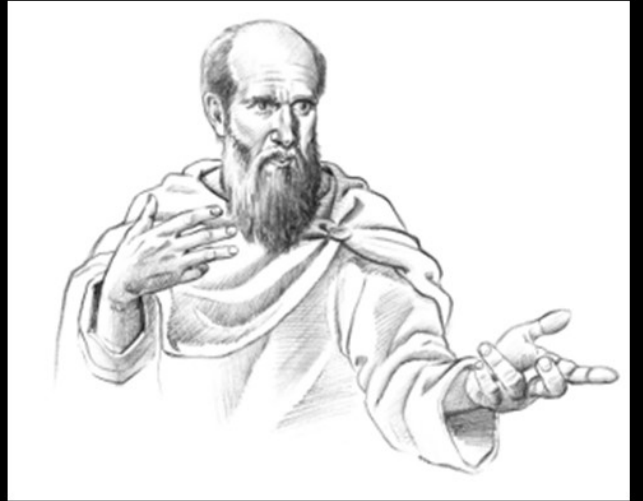


your kingdom  
your will  
on earth

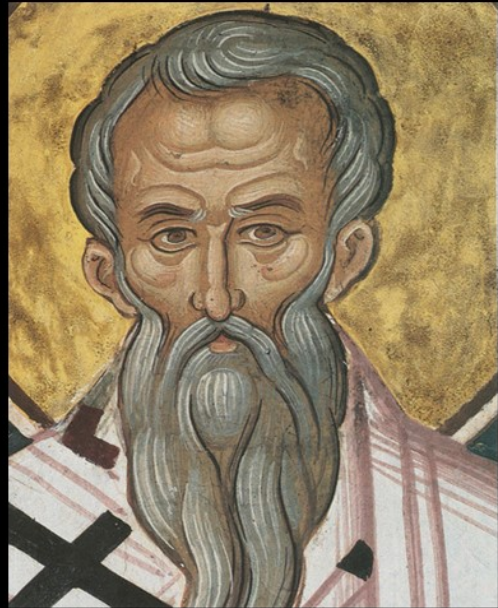
# TRAJECTORY

Murdering newborns through drowning or exposure to cold, hunger or animals  
In his writing “Ad Nationes”, Tertullian (approx. 155-220 A.D.) records how many pagans in the Roman Empire in the late 100’s and early 200’s A.D. used to murder their newborn children

your kingdom  
your will  
on earth



# TRAJECTORY



In his Book 3 of his writing “Instructor”, Clement of Alexandria (approx. 150-215 A.D.) wrote how many Roman women at his time cared more about birds than they did their own newborn babies

your kingdom  
your will  
on earth

A graphic at the top of the slide features a dark purple and green background. A dashed white line with a white triangle pointing downwards represents a trajectory. The word "TRAJECTORY" is written in white capital letters on a green circular background. To the right, there are vertical white lines of varying lengths, resembling a scale or a list.

# TRAJECTORY

**And yet, the church grew and grew.**

your kingdom  
your will  
on earth